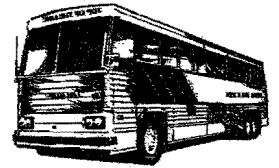


# TOP OF THE LINE TOURS

1908-G Savannah Highway • Charleston, South Carolina 29407 • (843) 766-0747



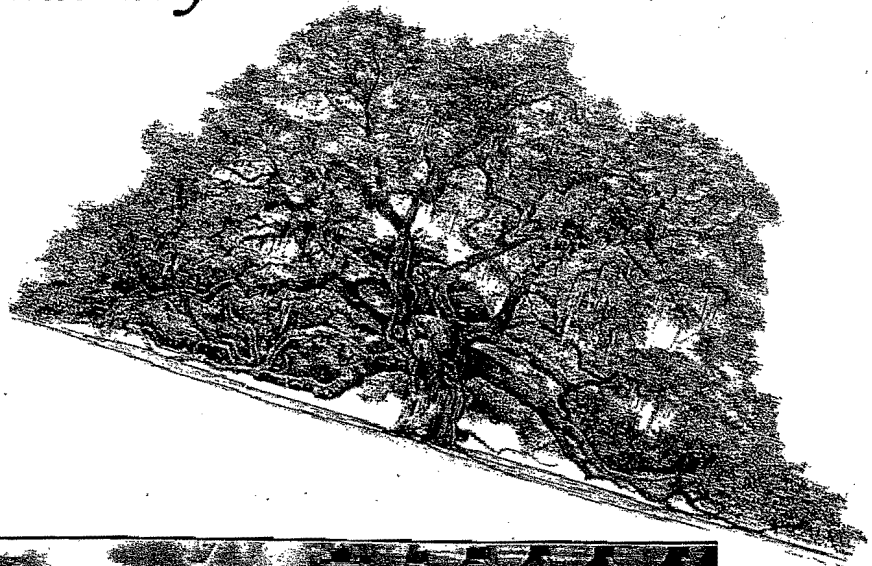
## *Charleston Tea Plantation*

*&*

## *Irvin-House Vineyards*

*October 23, 2012*

*Tuesday*



We will depart Ashley Landing at 9:15 AM, and travel to the Charleston Tea Plantation on Wadmalaw Island. A designated staff member, who will provide an informative introduction to the plantation and the factory tour, will greet us. Our trolley tour is an educational experience that is a “must do” when visiting the Charleston Tea Plantation. The tour is narrated by William Barclay Hall, founder of the American Classic Tea and world renowned Tea Taster. He will educate you about the history of America’s “Only” tea garden while challenging your knowledge. The tour focuses more on the horticultural aspect of the plantation and you will discover little known facts about the growth and production of tea. We will have time to browse the gift shop before having a delicious boxed lunch (TOL) in the scenic picnic area surrounded by live oak trees. After lunch we will board the coach and depart for the Irvin-House Vineyard,

the only domestic winery in Charleston, SC. They grow the muscadines, harvest them, make the wine, and bottle the wine on the property. After our tour we will have a free wine tasting session and you will have time to browse the gift shop and purchase any of the wines to take home and enjoy. Our next stop will be at The Angel Oak, believed to be in excess of 1,500 years old and thought to be one of the oldest living things east of the Mississippi River. Its massive, draping limbs and wide spreading canopy presents the aura of an angel, hints its name, but the name was acquired from the tree's previous owners, Martha and Justin Angel. We will have time to browse the gift shop before returning to Ashley Landing around 3:30 PM. (L)

This trip includes:

- \*\* R/T transportation via modern motorcoach
- \*\* 24-hour escort service
- \*\* Tour of the Charleston Tea Plantation
- \*\* Box Lunch at the Charleston Tea Plantation
- \*\* Free American Classic Goodie Bag at the Charleston Tea Plantation
- \*\* Tour of the Irvin-House Vineyards
- \*\* Visit Angel Oak
- \*\* Tips and gratuities for local guides. Gratuities for the driver and escort are optional and strictly voluntary.

PRICE PER PERSON: MEMBER \$95.00 NON MEMBER \$100.00

PAYMENT IN FULL DUE AT TIME OF BOOKING TO RESERVE YOUR SPACE.

CANCELLATION POLICY: If an individual cancels their trip 31 days or more prior to departure, a refund will be made subject to deductions for any expenses incurred for prepaid items. If a participant cancels less than 30 days prior to departure date, no refunds will be made. Customer may sell their space to another individual. In the event of cancellation by TOP OF THE LINE TOURS, all monies paid will be refunded in full

TOP OF THE LINE TOURS reserves the right to cancel any tour for conditions beyond our control, including insufficient participation, and to change or modify the itinerary as may be necessary for completion of a tour or for the safety of our passengers. We reserve the right to accept or reject any person as a member of our tour at any time. It is our intention to provide congenial traveling companions. Thus, we reserve the right to take individuals off trips at any point if said person disrupts the tour for others. The balance of that person's tour would be refunded.

PLEASE NOTE: We must know in advance if you have a disability that prevents your independence. A traveling companion that will assume full responsibility for your care and mobility must accompany you.