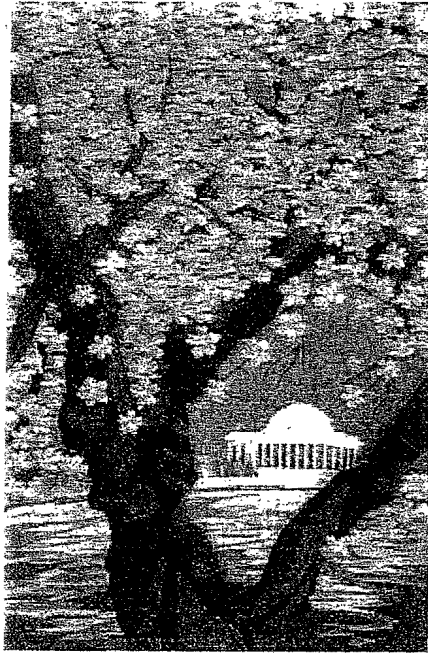


# TOP OF THE LINE TOURS

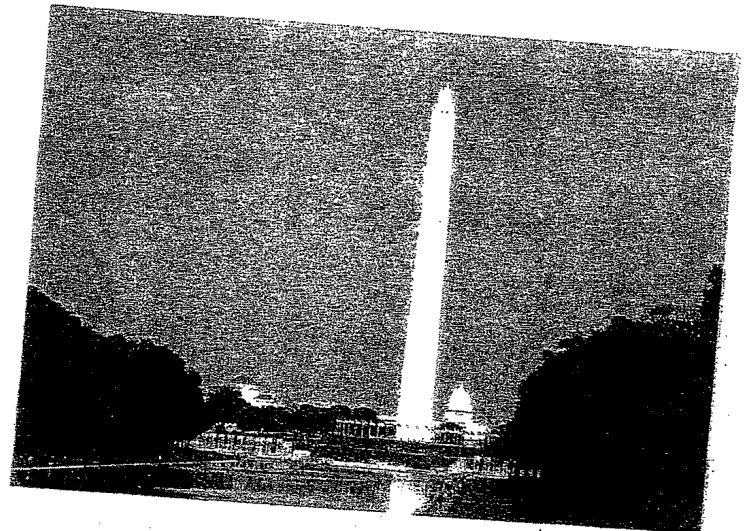
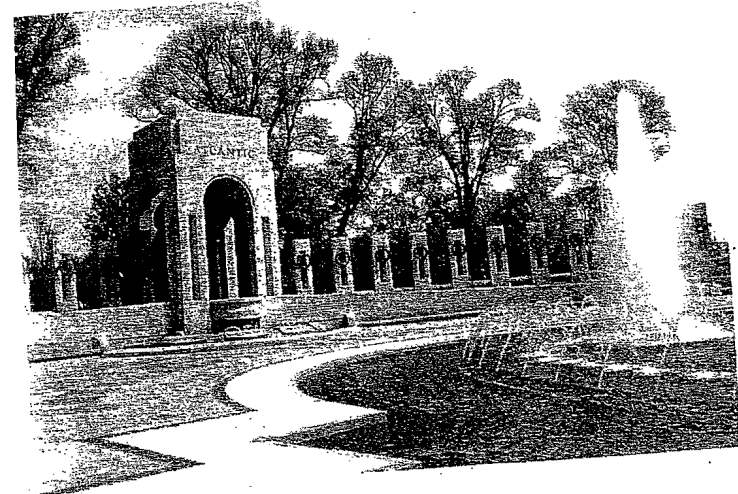


1908-G Savannah Highway • Charleston, South Carolina 29407 • (843) 766-0747

## Washington, DC Cherry Blossoms March 30 - April 2, 2012 Friday - Monday



CENTENNIAL CELEBRATION  
OF THE GIFT OF TREES



***IN 2012, THE NATIONAL CHERRY BLOSSOM FESTIVAL WILL CELEBRATE THE 100<sup>TH</sup> ANNIVERSARY OF THE GIFT OF THE BEAUTIFUL CHERRY BLOSSOM TREES TO THE UNITED STATES FROM JAPAN.***

**DAY ONE – FRIDAY – MARCH 30, 2012**

We depart Ashley Landing Mall this morning at 6:45. We will journey to Washington, D. C. This is a beautiful trip with the arrival of spring. We will see some wonderful scenery along the way. The gorgeous cherry trees that surround the Tidal Basin were a gift from the people of Japan as a memorial of national friendship between the United States and their country. Our hotel is located just outside of Washington. We are staying in the same hotel on this trip for three nights, so you can unpack and make yourself at home. After arrival you will have time to freshen up before our “Welcome Dinner” on TOL. (DINNER INCLUDED TODAY)

**DAY TWO – SATURDAY – MARCH 31, 2012**

This morning we will get an early start after breakfast. We will have a full day of seeing the great sights. Today we will visit Mt. Vernon, located on the southern end of the George Washington Memorial Parkway, overlooking the Potomac River. The mansion contains much of the original furniture and has been restored to appear as it was during the last year of George Washington’s life. Just as carefully preserved are the stables, kitchens and gardens. The tomb of George and Martha Washington are located near the house. This is an interesting place to tour and due to requests in the past; we are allowing extra time to visit here. Lunch today will be a special treat. We will be dining at the Mt. Vernon Inn for a hearty helping of colonial charm served up by waitpersons in period costume making this a memorable event. After lunch we will return to the city to visit the Mall; this is the area between the Capitol and the Washington Monument. We will drive around this area and show you some of the sights including the WWII Memorial, Lincoln, Viet Nam, Korean, FDR, American Indian and the Holocaust memorials. This evening we will have dinner, on own, at Union Station. For over 90 years, Union Station has welcomed people to the most important city in the world. After dinner we will drive around the city to enjoy the sights of the night. (CONTINENTAL BREAKFAST AND LUNCH INCLUDED TODAY)

**DAY THREE – SUNDAY – APRIL 1, 2012**

A continental breakfast is available this morning at our hotel before we begin our day of viewing this beautiful place. Due to requests on past trips, today you will have the complete day to enjoy the Smithsonian Buildings. You can choose the buildings you want to visit. Two of the newer buildings are the American Indian Memorial and the Holocaust Memorial. Lunch is on own. Late afternoon, we will pick you up at a predetermined time and return to the hotel. After freshening up, we will have a “Farewell Dinner” at our hotel and your evening is free. (CONTINENTAL BREAKFAST AND DINNER INCLUDED TODAY)

DAY FOUR – MONDAY – APRIL 2, 2012

We will enjoy a continental breakfast this morning before checking out of our hotel. This has been a great place to visit, but it is time to head home to Charleston. There will be rest stops and lunch, on own, en route. We should arrive back in Charleston around 6:30 PM. (CONTINENTAL BREAKFAST INCLUDED TODAY)

THIS TRIP INCLUDES:

- \*\* R/T transportation via modern motorcoach
- \*\* 24 hour accident/trip cancellation & trip interruption insurance
- \*\* 24 hour services of a tour escort
- \*\* Baggage handling (while every effort is made to assure safe handling, we ARE NOT responsible for lost or damaged luggage)
- \*\* 4 Days / 3 nights lodging
- \*\* 6 Meals (3 continental breakfasts / 1 lunch / 2 dinners)
- \*\* Tour of Mt. Vernon Estate and Gardens
- \*\* Lunch at the Mt. Vernon Inn
- \*\* Evening driving tour of illuminated memorials
- \*\* See in Washington:
  - World War II Memorial
  - Smithsonian Buildings
  - Holocaust Memorial Museum
  - Jefferson Memorial
  - Lincoln Memorial
  - Korean War Memorial
  - Vietnam War Memorial
  - And More!
- \*\* Top of the Line Tours provides all normal tips and gratuities for bellmen, group meals and local guides. Gratuities for the driver and escort are optional and strictly voluntary.

PRICE PER PERSON:	SINGLE	DOUBLE	TRIPLE	QUAD
MEMBER	\$686.00	\$521.00	\$472.00	\$447.00
NON MEMBER	\$717.00	\$562.00	\$493.00	\$467.00

DEPOSIT OF \$150.00 PER PERSON MUST BE PAID TO RESERVE YOUR SPACE.  
FINAL PAYMENT IS DUE ON OR BEFORE FEBRUARY 29, 2012

24-HOUR ACCIDENT/TRIP CANCELLATION/TRIP INTERRUPTION

INSURANCE. We have included the cost of the insurance program in the trip cost. It will cover you in the event of a sudden emergency before or during your trip. The insurance program includes the benefits as outlined in the schedule of benefits provided and is subject to the terms and conditions as described in the Motorcoach Tour Protection Plan Brochure.

CANCELLATION POLICY: If an individual cancels their trip 31 days or more prior to departure a refund will be made subject to deductions for any expenses incurred for prepaid items. If a participant cancels less than 30 days prior to departure date, a claim must be filed with the insurance company to obtain a refund of any monies paid. In the event of cancellation by Top of the Line Tours, all monies paid will be refunded in full.

TOP OF THE LINE TOURS reserves the right to cancel any tour for conditions beyond our control, including insufficient participation, and to change or modify the itinerary as may be necessary for completion of a tour or the safety of our passengers. We reserve the right to accept or reject any person as a member of our tour at any time. It is our intention to provide congenial traveling companions. Thus, we reserve the right to take individuals off trips at any point if said person disrupts the tour for others. The balance of that person's tour would be refunded.

PLEASE NOTE: We must know in advance if you have a disability that prevents your independence. A traveling companion that will assume full responsibility for your care and mobility must accompany you.